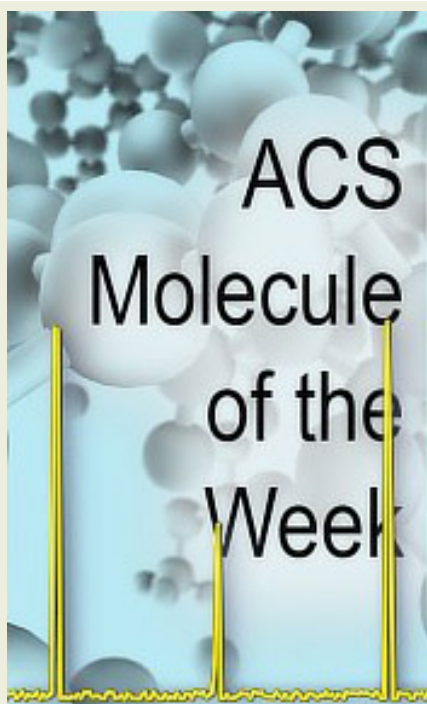


Mass Media

JEOL

Mass Spectrometry News and Applications
JEOL USA, Inc. March 2009



ACS Molecule of the Week

JEOL has analyzed many of the ACS Molecules of the Week with the AccuTOF-DART. [Check out our complete listing online.](#)

PITTCON

CONFERENCE & EXPO 2009
CHICAGO · MARCH 8-MARCH 13

See Us at Pittcon

We're celebrating our 60th anniversary this year, and so is Pittcon!

JEOL USA heads to Chicago in March to the 60th annual Pittcon conference and exhibition. As always, the JEOL booth will be the site for demonstrations of new instruments. The new AccuTOF-GCv time-of-flight mass spectrometer will be introduced. The [AccuTOF-DART with open air ion source](#) will be demonstrated in the booth, as will the latest in [JEOL NMR technology and software](#).



Stop by or contact us to arrange a personal demonstration of the AccuTOF-DART(TM) or NMR software during Pittcon, or [send us any advance questions you may have.](#)

Upcoming Events

Pittcon

60th Anniversary
Booth 3948/4048
March 8-13
Chicago, IL

Spring ACS

Booth #1724
March 22-25
Salt Lake City, UT

ENC

50th Anniversary
March 29-April 3
Pacific Grove, CA

Quick Links

[Ask the Experts -
contact the JEOL mass
spec department](#)

[Our Website](#)

[Mass Spec Products](#)

[Back Issues of Mass Media](#)



See us at the 50th Experimental Nuclear Magnetic Resonance Conference - ENC.

JEOL introduced its first Nuclear Magnetic Resonance (NMR) spectrometer in 1956, and has contributed to the advancement of the highly specialized technology with an industry-leading, cyber-enabled software platform, automatic sample exchange, and flexibility for routine classroom operation to running the most demanding multi-dimensional NMR

experiments. The company has revolutionized mass spectrometry with the introduction of a direct analysis technique that bypasses traditional sample preparation and performs exact mass analysis with confidence.



JEOL Introduces Highest Sensitivity GC-TOF Mass Spectrometer

The new AccuTOF-GCv from JEOL features the highest sensitivity of any GC time-of-flight mass spectrometer commercially available. By combining rapid data acquisition speeds with high resolution and a high dynamic range, the AccuTOF-GCv delivers exact mass measurements for both qualitative and quantitative analysis.



The new AccuTOF-GCv introduces several new features including:

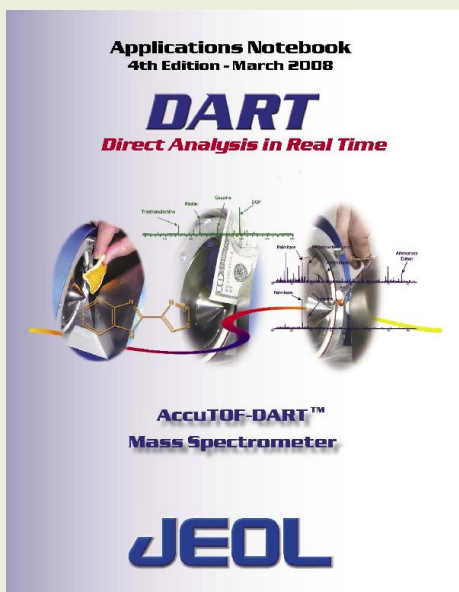
CONTACT JEOL

If you would like to speak directly with us, please call 978-536-2310

National Sales Mgr.
Bob DiPasquale
dipas@jeol.com

Service
Bill Miller
miller@jeol.com

Applications Notebook for AccuTOF-DART™ Open Air Mass Spectrometry



The 4th Edition of Applications Notes for the AccuTOF-DART is now available. To download, click on the image.

Mass Spec & NMR Reference Data

Bookmark www.jeolusa.com for complete access to useful mass spec [Tutorials](#), [NMR Tutorials](#), and [application notes](#).

- automatic ion source tuning
- automatic drift calibration
- automatic data file conversion and export
- optional EI/FI/FD ion source

The Tuning Assistant function optimizes ion source parameters for peak ion intensity.

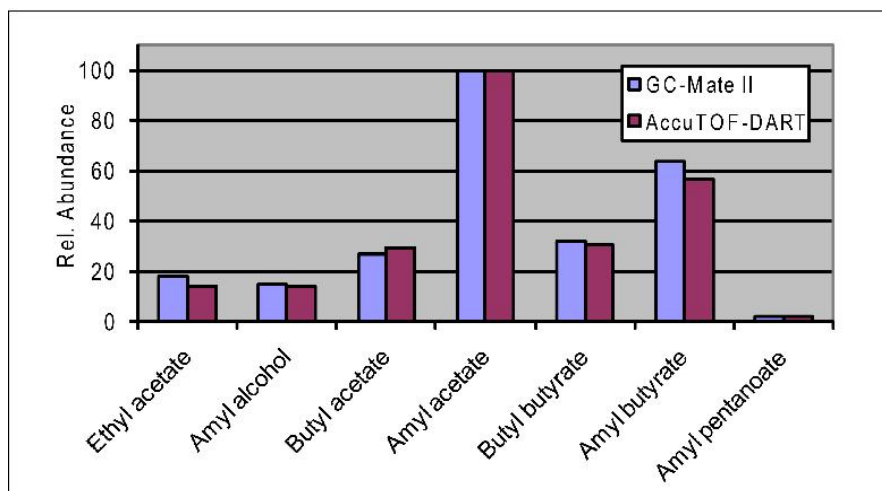
A new optional EI/FI/FD combination ion source allows rapid source interchange without vacuum interference. The combination source also enables GC-FI operation for characterizing samples that are difficult for traditional GC-EI or GC-CI measurements. The AccuTOF-GCv aids qualitative analysis using the mass spectra library search, polymer analysis, and hydrocarbon analysis.

High sensitivity ($S/N > 100$ at OFN 1 pg/mL) allows for rapid exact mass and target compound identification in trace analyses. The AccuTOF-GCv combines high-speed acquisition of 25 averaged spectra per second with high resolution of 6000 FWHM -- plus it provides the highest linear dynamic range for analysis of both low and high concentrations.

New Applications Note: "Using Solid Phase Microextraction with AccuTOF-DART for Fragrance Analysis"

Solid phase microextraction (SPME) is a well established sampling technique that is often used to isolate volatile organic components in gaseous mixtures. This applications note describes how the Direct Analysis in Real Time (DART) heated gas stream is used to desorb and directly introduce a SPME sample into a high-resolution mass spectrometer. This methodology produces comparable information to the traditional GC-MS technique, but streamlines the results into only a few seconds of analysis time. [Download the](#)

[full applications note >>>](#)



ASMS Sanibel Conference on Mass Spectrometry - *Lipidomics and Lipids in Mass Spectrometry*

DART™ (Direct Analysis in Real Time) mass spectrometry can quickly provide mass spectral information for a wide variety of samples containing lipids with minimal sample preparation. JEOL presented a poster on "Detection of Lipids Using Direct Analysis in Real Time Mass Spectrometry" at the [ASMS Sanibel Conference](#) January 23-26, 2009.

[Download the poster here>>>](#)

