

In TouchScope

JSM-6010LA/JSM-6010LV



New style of SEM from JEOL

New style of operation

The new touch-screen operating system is intuitive and easy to learn.

Set up anywhere

Plug in to wall outlet. No cooling water. PC can be connected wirelessly.

High performance powerful tool

All the necessary functions are built in.

Simple to maintain

No liquid nitrogen for EDS. Factory pre-centered filament.

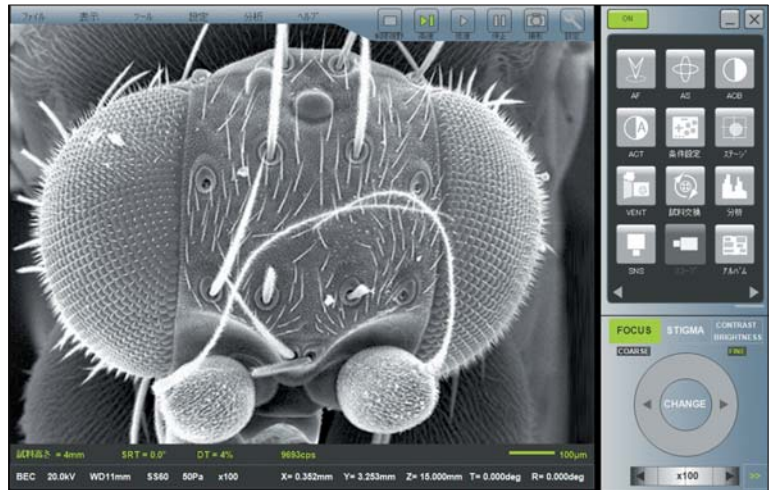
JEOL

Serving Advanced Technology

New style of SEM from JEOL *All-in-one Multi-touch-screen SEM*

New style of operation

The InTouchScope JSM-6010LA / JSM-6010LV are efficient SEMs with intuitively easy operation. The new InTouchScope operating system has been developed for first time users as well as for users in a variety of operational environments.



InTouchScope panel

■ Wireless mode

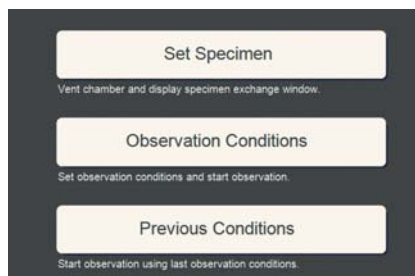
The PC can be connected wirelessly*. One can bring the PC to a convenient location. Operation is by touch screen and / or mouse.

*require an optional wireless system



■ Easy start-up of SEM

Starts with the touch of a button. Standard recipes for a variety of specimens enable a quick set-up of operating conditions.



Set-up window

■ Standing mode

An optional monitor stand can be used when operating the SEM in a limited space, for example, in a production line.



■ Expert mode

A large touch screen PC* for seated operation with or without a mouse is also available. Simply choose your mode when ordering. *optional

■ Operation knob set*

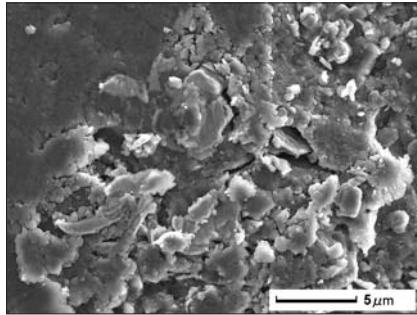
The operation knobs for frequently used controls such as magnification, focus, brightness, and contrast can be provided as an option. The joy stick controls the motorized stage*.

*optional

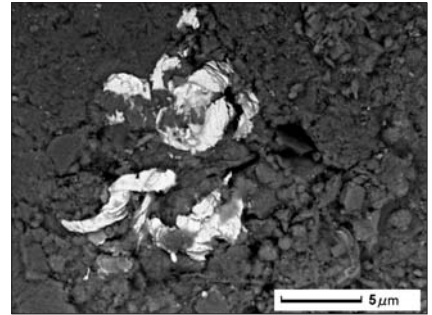


Research level performance in a mobile SEM

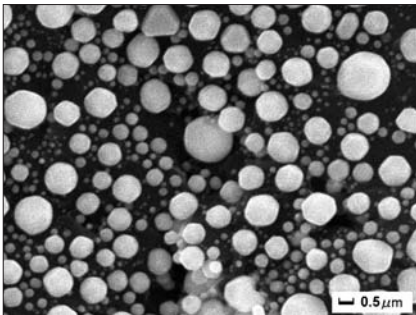
The JSM-6010LA/JSM-6010LV are compact mobile SEMs with high performance suitable for research use. Surface structures are observed by secondary electrons, distribution of materials in a specimen is observed by backscattered electrons, and elements are analyzed by EDS. All the necessary functions are available in the All-in-one mobile multi-touch-panel SEM.



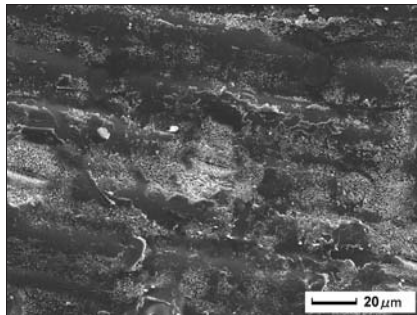
Sand (secondary electron image) 7kV x5,000



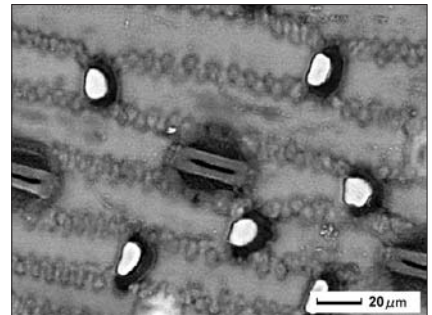
Sand (backscattered electron image) 7kV x5,000



Gold evaporated particles on carbon
(Secondary electron image) 20kV x50,000



Leaf (secondary electron image) 7kV x700

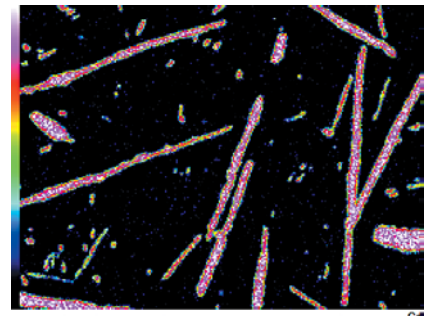


Leaf (backscattered electron image) 7kV x700

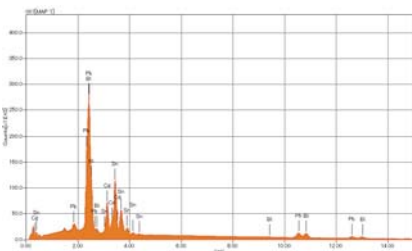
The EDS (energy dispersive X-ray analyzer) analyzes elements in a specimen. The quantitative analysis calculates concentration of elements. The elemental maps show the distribution of elements.



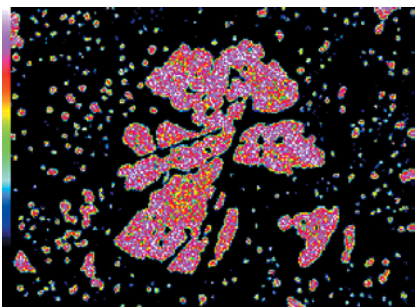
backscattered electron image



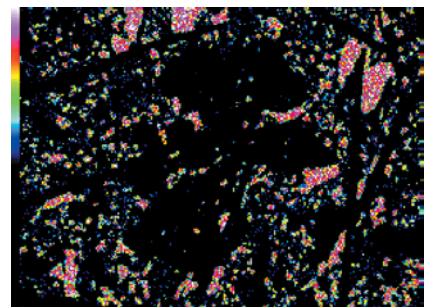
Cadmium



Wood metal 20kV x1,000



Tin



Bismuth

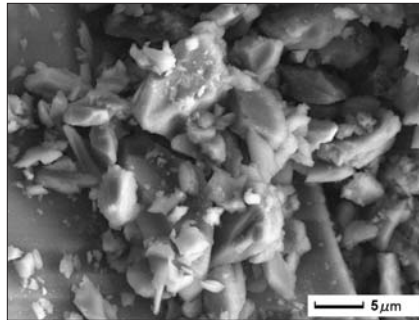
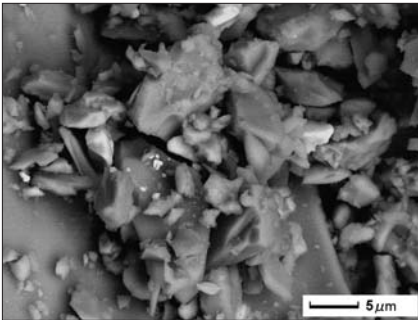
Non-conductive specimens

■ High vacuum mode

The high performance optics allows you to use low voltages for observation of non-conductive specimens in the high vacuum mode.

■ Low vacuum mode

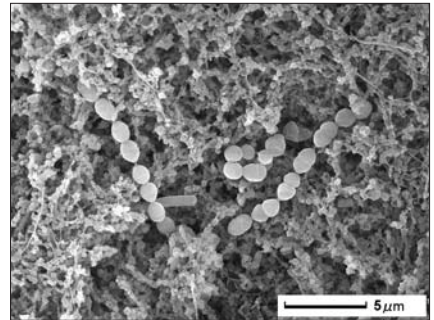
You can observe and analyze non-conductive specimens in the low vacuum mode.



Volcanic ash (low vacuum BSE image) 15kV ×3,000 Volcanic ash (low vacuum SE image) 15kV ×3,000

Freeze dry method

You can dry and observe water containing specimens by freeze drying in the low vacuum mode. The yogurt below was dried in this method and then coated and observed in the high vacuum mode.



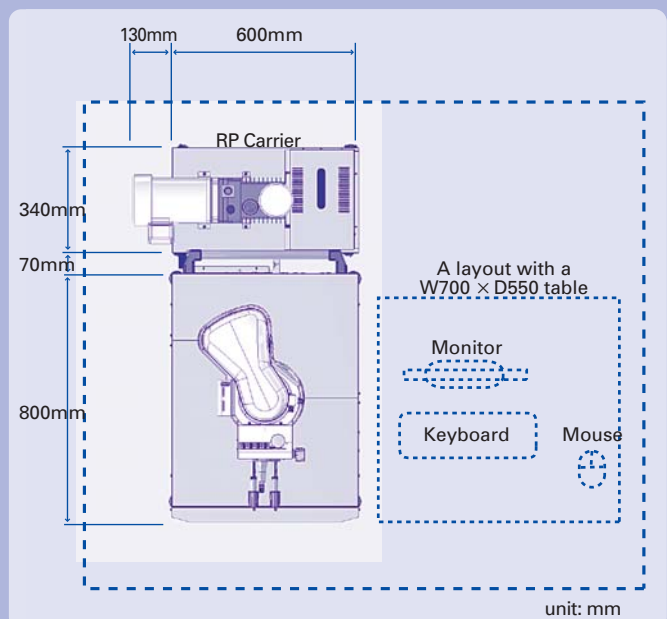
Yogurt 15kV ×5,000

Stage Navigation System

In addition to the standard stage navigation using a snap shot image of a specimen, the optional stage navigation system (SNS) takes an image of a specimen by the CCD camera and uses this image for the stage navigation over a larger area.



Installation Layout



*Specifications subject to change without prior notice.



High technology for quality assurance and the environment.

Certain products in this brochure are controlled under the "Foreign Exchange and Foreign Trade Law" of Japan in compliance with international security export control. JEOL Ltd. must provide the Japanese Government with "End-user's Statement of Assurance" and "End-use Certificate" in order to obtain the export license needed for export from Japan. If the product to be exported is in this category, the end user will be asked to fill in these certificate forms.

JEOL JEOL Ltd.

1-2 Musashino 3-chome Akishima Tokyo 196-8558 Japan Sales Division Telephone:+81-42-528-3381 Facsimile:+81-42-528-3386

<http://www.jeol.com/>

•Australia/ JEOL (AUSTRALASIA) Pty. Ltd., Suite 1, L2 18 Aquatic Drive - Frenchs Forest NSW 2086 Australia **•Belgium/** JEOL (EUROPE) B.V., Planet II, Gebouw B Leuvensesteenweg 542, B-1930 Zaventem Belgium **•Canada/** JEOL CANADA, INC. (Represented by Soquelec, Ltd.), 5757 Cavendish Boulevard, Suite 540, Montreal, Quebec H4W 2W8, Canada **•China/** JEOL (BEIJING) CO., LTD. Room B1010/1110, Wantong New World Plaza No. 2 Fuchengmenwai Street, Xicheng District, Beijing 100037, P.R.China **•Egypt/** JEOL SERVICE BUREAU, 3rd Fl. Nile Center Bldg., Nawal Street, Dokki, (Cairo), Egypt **•France/** JEOL (EUROPE) SAS, Espace Claude Monet, 1 Allée de Giverny 78290, Croissy-sur-Seine, France **•Germany/** JEOL (GERMANY) GmbH, Oskar-Von-Müller-Strasse 1a, 85386 Eching, Germany **•Great Britain & Ireland/** JEOL (U.K.) LTD., JEOL House, Silver Court, Watchmead, Welwyn Garden City, Herts AL7 1LT, U.K. **•Italy/** JEOL (ITALIA) S.p.A., Centro Direzionale Green Office Via dei Tulipani, 1 20090 Pieve Emanuele (MI) Italy **•Korea/** JEOL KOREA LTD., Dongwoo Bldg. 7F, 458-5, Gil-Dong, Gangdong-Gu, Seoul, 134-010, Korea **•Malaysia/** JEOL (MALAYSIA) SDN.BHD.(359011-M), 205, Block A, Mezzanine Floor, Kelana Business Center, 97, Jalan SS 7/2, Kelana Jaya, 47301 Petaling Jaya, Selangor, Malaysia **•Mexico/** JEOL DE MEXICO S.A. DE C.V., Av. Amsterdam #46 DEPS. 402 Col Hipodromo, 06100, Mexico D.F. Mexico **•Scandinavia/** JEOL (SKANDINAVISKA) A.B., Hammarbacken 6A, Box 716, 191 27 Sollentuna Sweden **•Singapore/** JEOL ASIA PTE. LTD., 2 Corporation Road #01-12 Corporation Place Singapore 618494 **•Taiwan/** JIE DONG CO., LTD., 7F, 112, Chung Hsiao East Road, Section 1, Taipei, Taiwan 10023 Republic of China **•The Netherlands/** JEOL (EUROPE) B.V., Lireweg 4, NL-2153 PH Nieuw-Vennep, The Netherlands **•USA/** JEOL USA, INC., 11 Dearborn Road, Peabody, MA 01960, U.S.A.

•Please confirm other territories by the web site.