

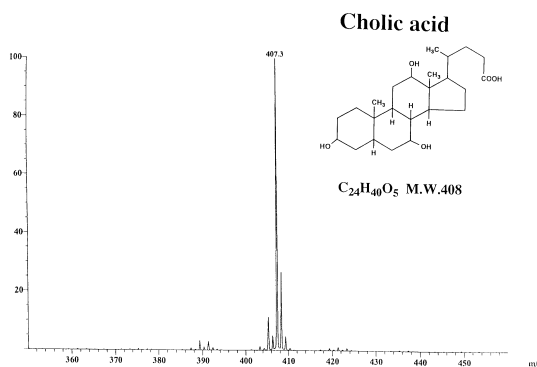
# JEOL

## GCmate, LCmate

### Fast Atom Bombardment Ion Source Option

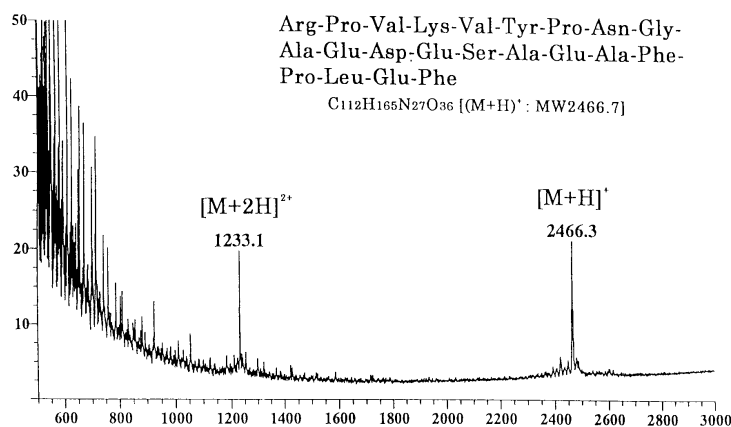
The *GCmate* and *LCmate* benchtop mass spectrometers can be fitted with an optional fast atom bombardment (FAB) ion source that provides a means for rapid and convenient analysis of polar or thermally labile molecules. The FAB source can be operated in positive and negative-ion mode, and it can be used for high-resolution or MS/MS measurements (with the linked scan MS/MS option). The *LCmate* can be fitted with an optional frit-FAB LC/MS interface, and an auto-probe has also been developed that can allow unattended analysis of up to 40 direct-probe FAB samples at a time. Some examples of FAB analysis with *GCmate* are shown here.

#### Negative-Ion FAB



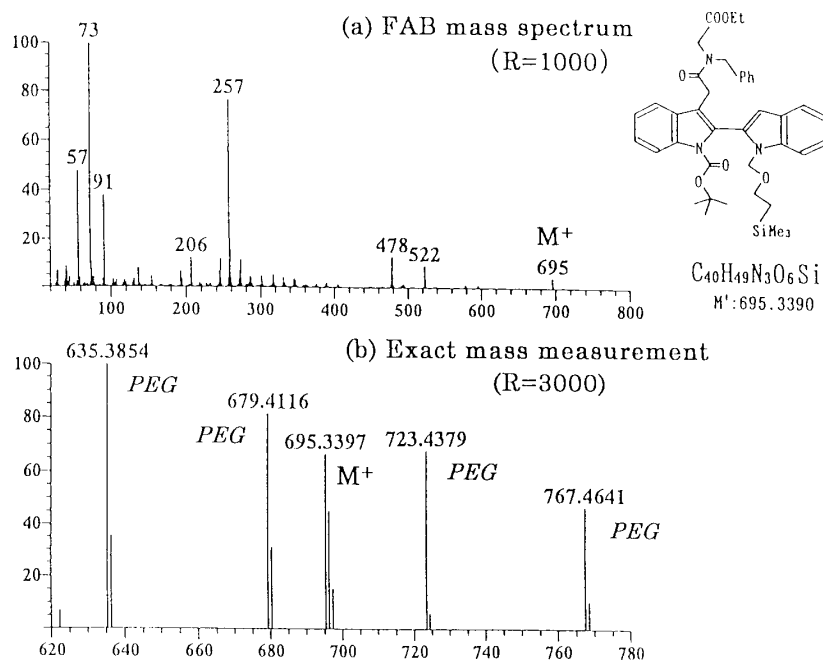
Negative FAB Spectrum of Cholic acid

#### Increased Mass Range at Reduced Accelerating Voltage



FAB mass spectrum of ACTH(18-39)

## Elemental Composition Determination for a Synthetic Compound by FAB Exact Mass Analysis with **GCmate**



<u>Measured mass</u>	<u>Formula</u>	<u>Calculated mass</u>	<u>Difference (mmu)</u>
695.3397	$C_{40}H_{49}N_3O_6Si$	695.3390	-0.7