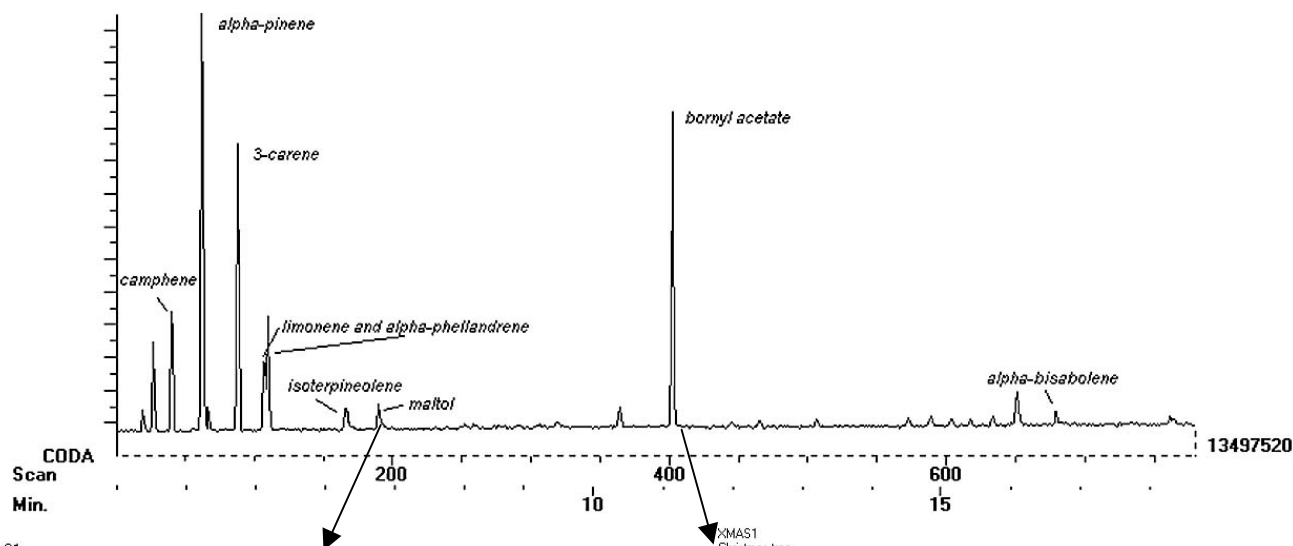


# JEOL GCmate

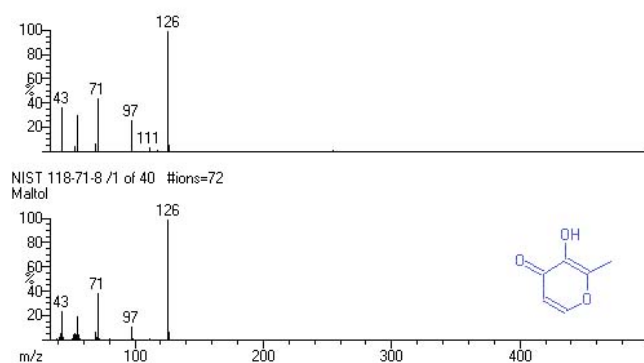
## GC/MS Analysis of an Extract from the JEOL Christmas Tree

A few needles from the holiday tree in the lobby of our Peabody office were extracted with dichloromethane and analyzed with the JEOL GCmate GC/MS system. Components were identified by a library search of the mass spectra. The fragrance comes from a complex mixture of terpenes such as alpha-pinene (familiar pine aroma) and limonene (citrus aroma) and other compounds, such as maltol (fresh-baked bread aroma).

XMAS1  
Christmas tree

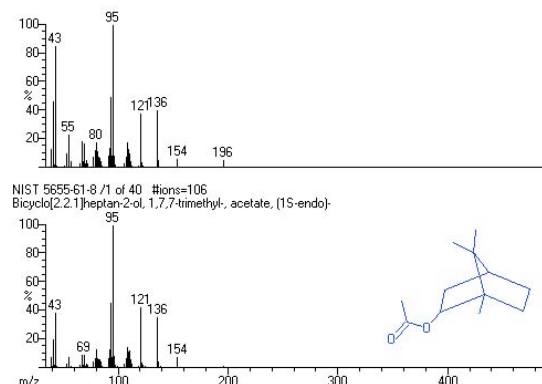


XMAS1  
Christmas tree  
Scan: 191(186, 210) TIC=619024 Base=1.2%FS #ions=1895 RT=6.47



Mass spectrum and library spectrum of *maltol* (freshly-baked bread aroma).

XMAS1  
Christmas tree  
Scan: 402(388, 415) TIC=11693016 Base=10.4%FS #ions=1747 RT=11.08



Mass spectrum and library spectrum of *bornyl acetate* (pine-like aroma).

*Happy Holidays!*

JEOL USA, Inc.

11 Dearborn Rd., Peabody, MA 01960

Tel: (978)-535-5900 Fax: (978)-536-2205

e-mail: [ms@jeol.com](mailto:ms@jeol.com) WWW: <http://www.jeol.com>