

Choose the Right SEM for Your Lab

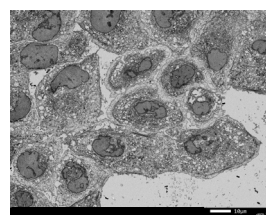
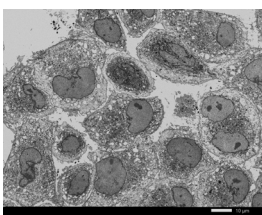
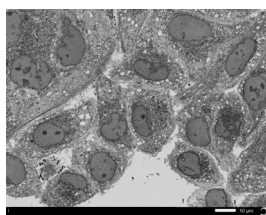
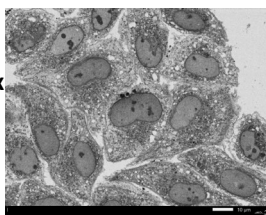

Tabletop

Tungsten

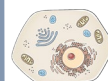
**Multipurpose
Field Emission**

UHR Field Emission

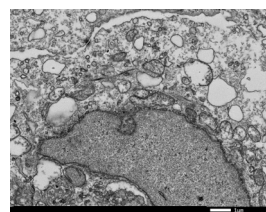
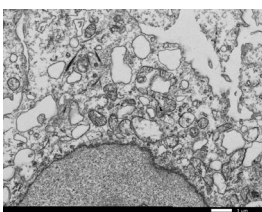
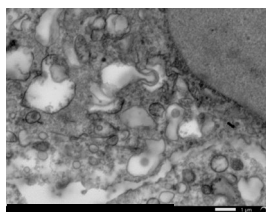
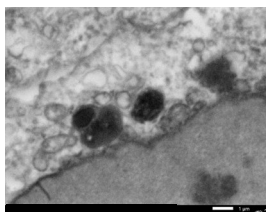
100nm/pix



100um



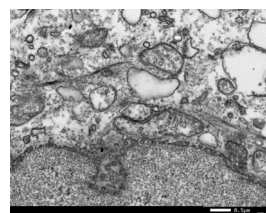
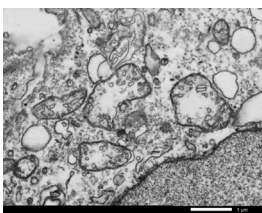
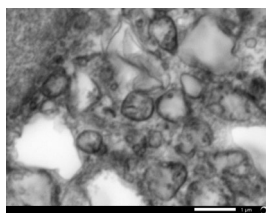
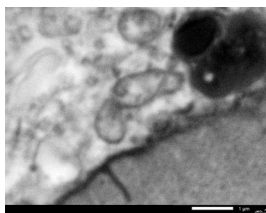
10nm/pix



10um



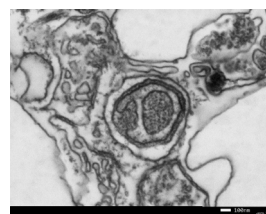
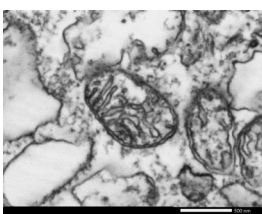
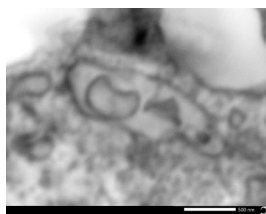
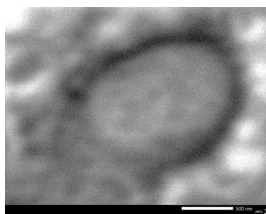
5nm/pix



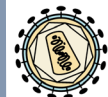
1um



2nm/pix



100nm



10nm

\$

\$\$\$

JEOL Intelligent SEM technology offers the best solutions for your imaging and analysis needs. All JEOL SEMs feature advanced electron optics combined with hardware and software algorithms to provide exceptional ease of use and streamlined workflow:

- Automated alignment, focusing and stigmation
- Seamless navigation from optical to SEM image
- Embedded chemical composition analysis
- Multi-area automated acquisition (mosaic)
- Unparallel service and applications support