

# Choose the Right SEM for Your Lab

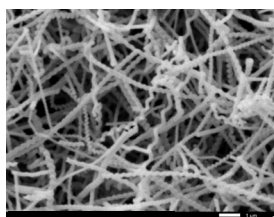


Tabletop

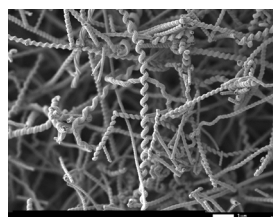
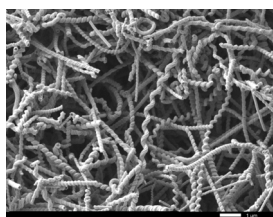
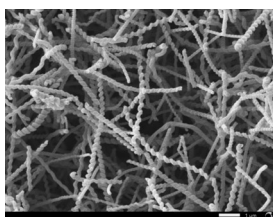


Tungsten

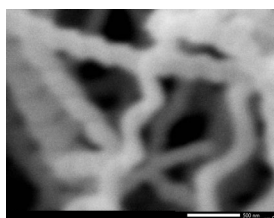

Multipurpose  
Field Emission

UHR Field  
Emission


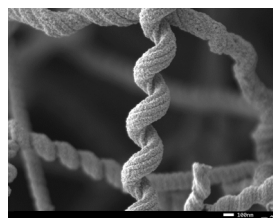
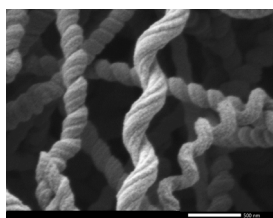
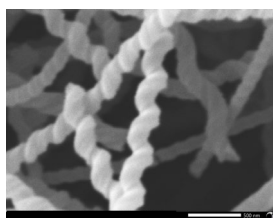
10nm/pix



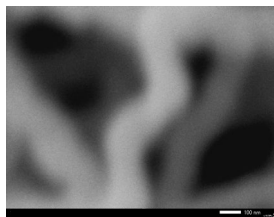
10um



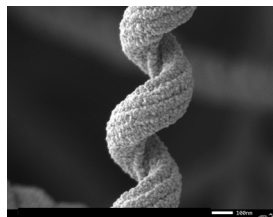
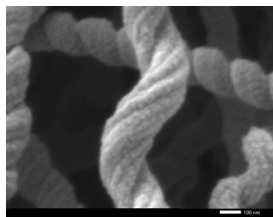
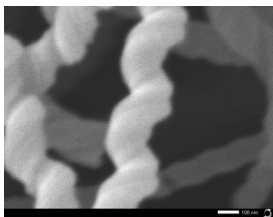
2nm/pix



1um



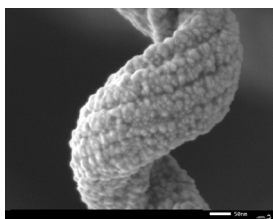
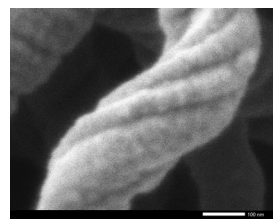
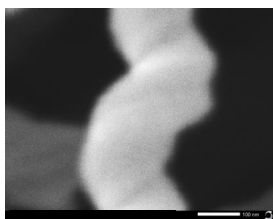
1nm/pix



100nm



0.5nm/pix



10nm

1nm

\$

\$\$\$

JEOL Intelligent SEM technology offers the best solutions for your imaging and analysis needs. All JEOL SEMs feature advanced electron optics combined with hardware and software algorithms to provide exceptional ease of use and streamlined workflow:

- Automated alignment, focusing and stigmation
- Seamless navigation from optical to SEM image
- Embedded chemical composition analysis
- Multi-area automated acquisition (mosaic)
- Unparallel service and applications support