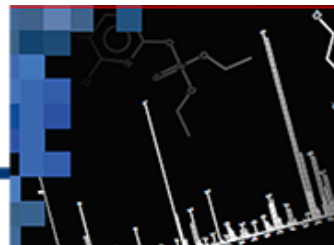


The Latest MS News from JEOL
Email not displaying correctly?
[View it in your browser](#)

[SEM](#) | [TEM](#) | [EPMA](#) | [Sample Prep](#) | [NMR](#) | [Mass Spec](#) | [FIB](#) | [E-Beam](#) | [Elemental Analysis](#)



[GC-TOFMS](#) | [GCxGC-TOFMS](#) | [AccuTOF-DART](#) | [Triple Quad GC-MS/MS](#) | [Single Quad GC-MS](#) | [MALDI-TOFMS](#)



Mass Spectrometry Newsletter

A New (Faster) Method for Pesticide Analysis: LPGC and Short Collision Cell Technology



Results from a new study by JEOL researchers show that the markedly-reduced elution time offered by an LPGC column and the ability of the short collision cell to distinguish a large number of coeluting peaks make these two technologies a natural pairing, particularly for pesticide analysis.

Read on to learn how leveraging these two key technologies can save you time in the lab.

[READ MORE](#)

Direct Analysis in Real Time: MD Partners with NIST to Identify Illicit Drugs



Lt. Governor Boyd K.

Rutherford announced a new partnership to identify dangerous illicit drugs and better understand the overdose risk to individuals living with substance use disorders.

Click the link below to learn more about how JEOL's AccuTOF™ DART® is being used to counter recent increases in overdose deaths.

[READ MORE](#)

Research that Resonates: Featured Users

Discoveries in Disease Diagnostics: Exploring the Ear Canal with GC x GC-MS



In today's world, touched by a pandemic, we find ourselves lending more and more attention toward personal health and novel methods of diagnosis.

One researcher, Rabi Musah, and her team at the State University of New York State at Albany have discovered a new use for the cerumen found on your post-

shower q-tip – medical diagnosis.

Click below to access the study.

[READ MORE](#)

Reliability of Wood Identification Using DART-TOFMS and the ForeST© database: A Validation Study



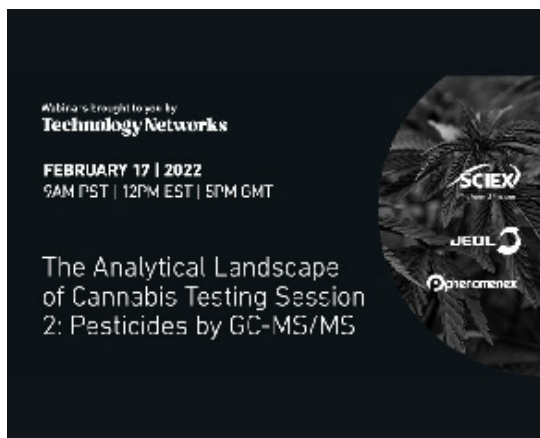
Species determination of timber is essential for enforcing logging quotas and species protections laws, but it is a challenging endeavor. Here researchers present a technique that relies on mass spectra chemotypes for species assignment and demonstrate that it provides high reliability.

Click below to access the study.

[READ MORE](#)

Event Center

On-Demand Webinar: The Analytical Landscape of Cannabis Testing Session 2: Pesticides by GC-MS/MS

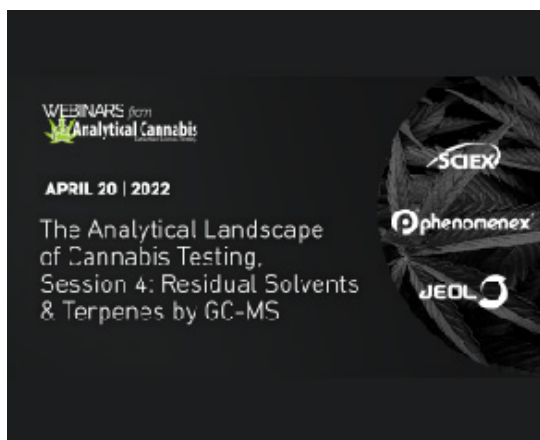


Join applications scientist Dr. Kirk Jensen as he presents sample workflow, instrument parameters, and results from testing cannabis samples for pesticide content.

Click below to watch this FREE webinar.

WATCH ON-DEMAND

Upcoming Webinar: The Analytical Landscape of Cannabis Testing Session 4: Residual Solvents & Terpenes by GC-MS



Don't miss the final installment of this webinar series where applications Scientist Dr. Kirk Jensen discusses headspace sampling and GC-MS measurement of residual solvents.

Click the link below to register.

REGISTER NOW

Want to see a demonstration of our instruments or talk with one of our experts in applications and technology? Interested in joining us at one of our upcoming conferences or meetings? [Check out our full schedule of events!](#)

This email was sent to nphillips@jeol.com by JEOLink@jeol.com. To ensure delivery of emails to your inbox, please add JEOLink@jeol.com to your address book or safe sender list. To view online, please [click here](#).

[Update Subscription Preferences](#)

JEOL USA, Inc. | 11 Dearborn Road | Peabody, MA 01960

Phone: (978) 535-5900 | salesinfo@jeol.com

