

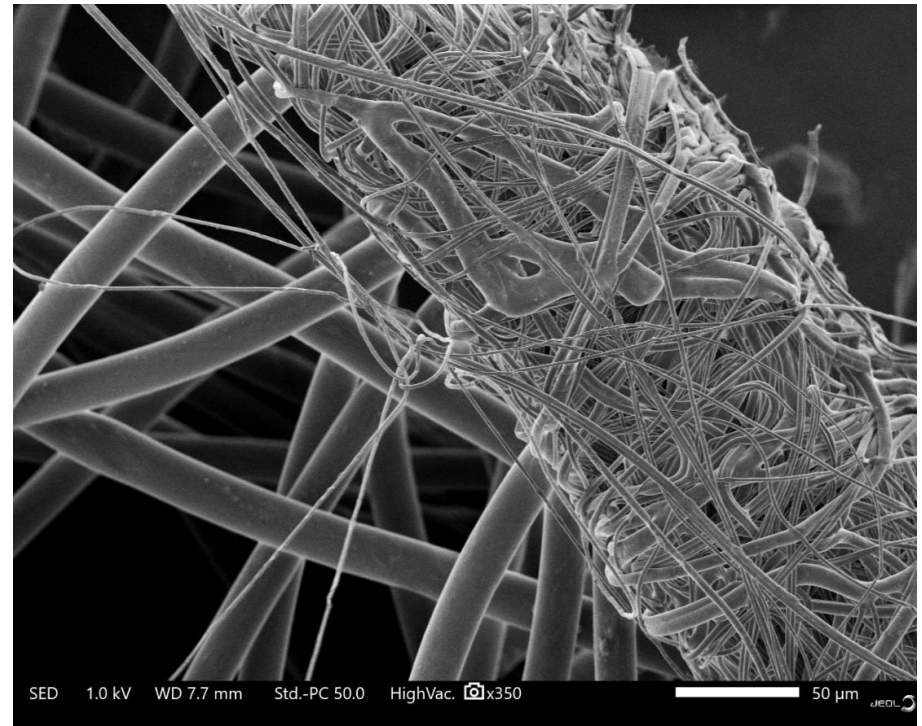
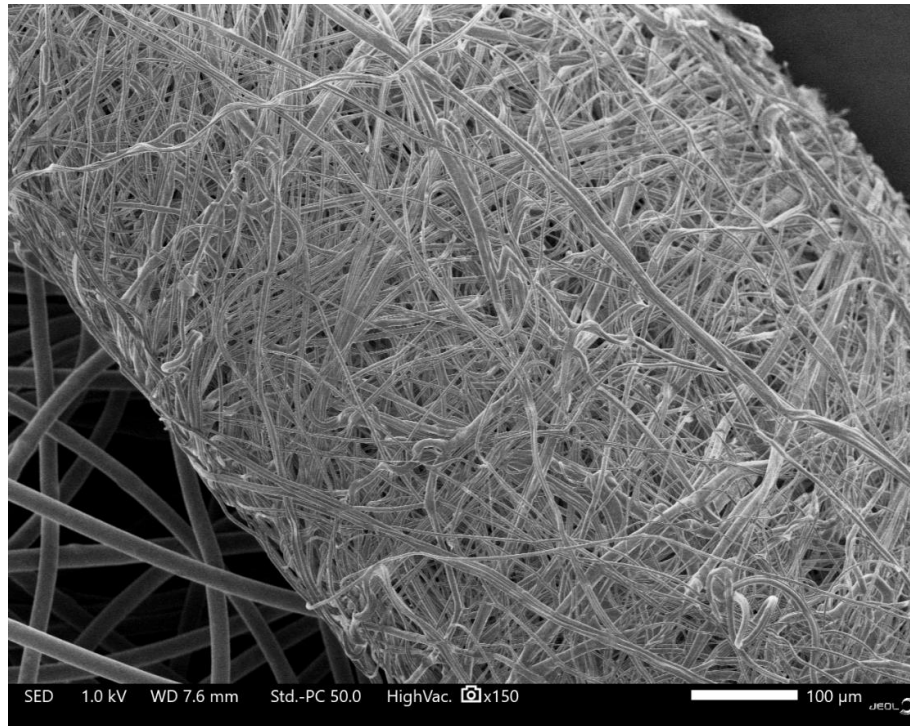
COVID 19 Pandemic Masks

Sample Information



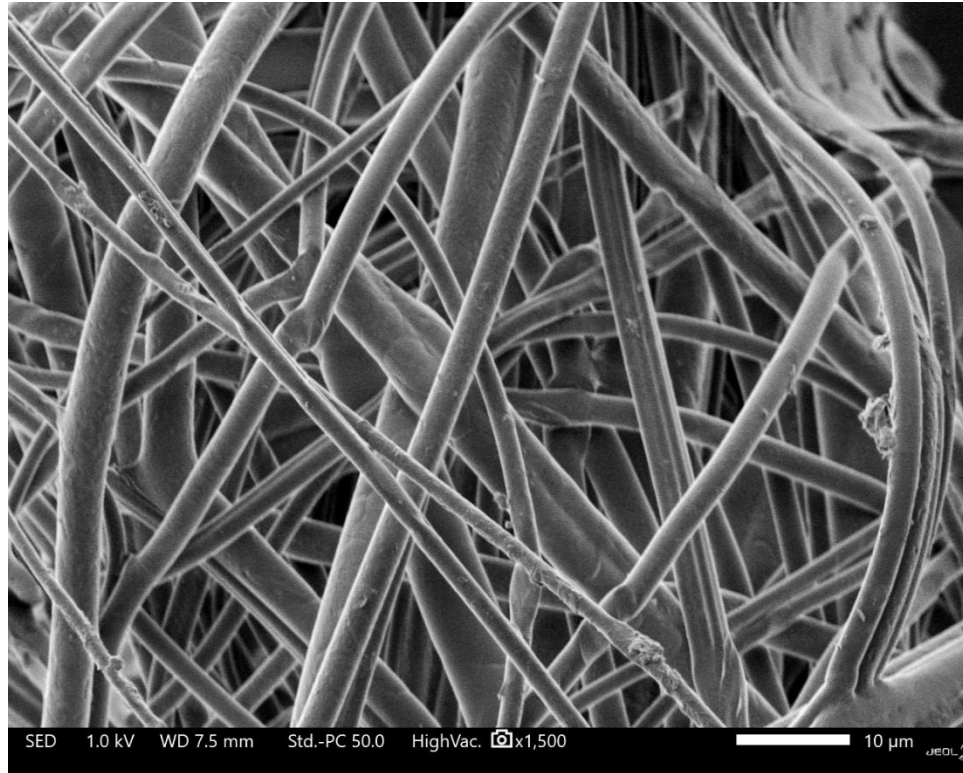
- Imaging conditions are listed on each slide.
- Carbon tape was used to adhere fragments of the masks.

Paper Mask



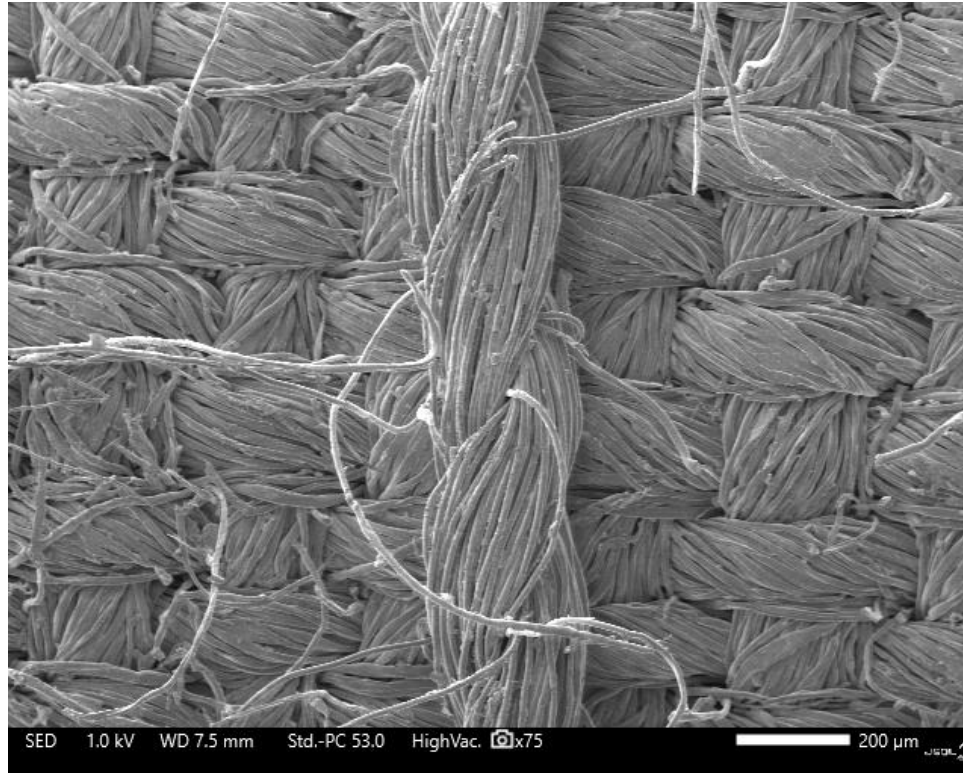
1 kV
Secondary Electron Images

Paper Mask



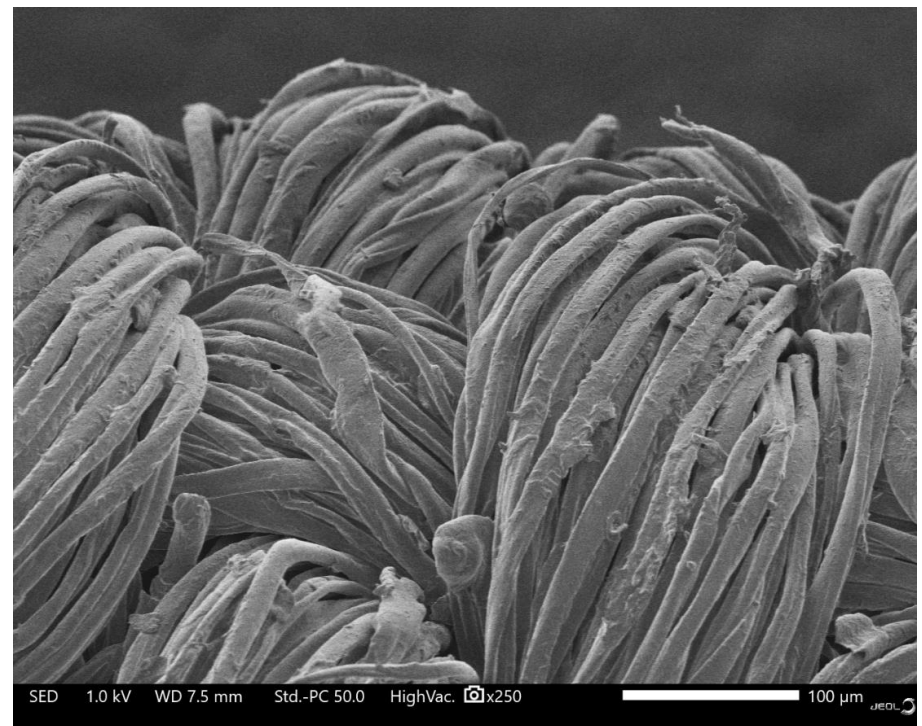
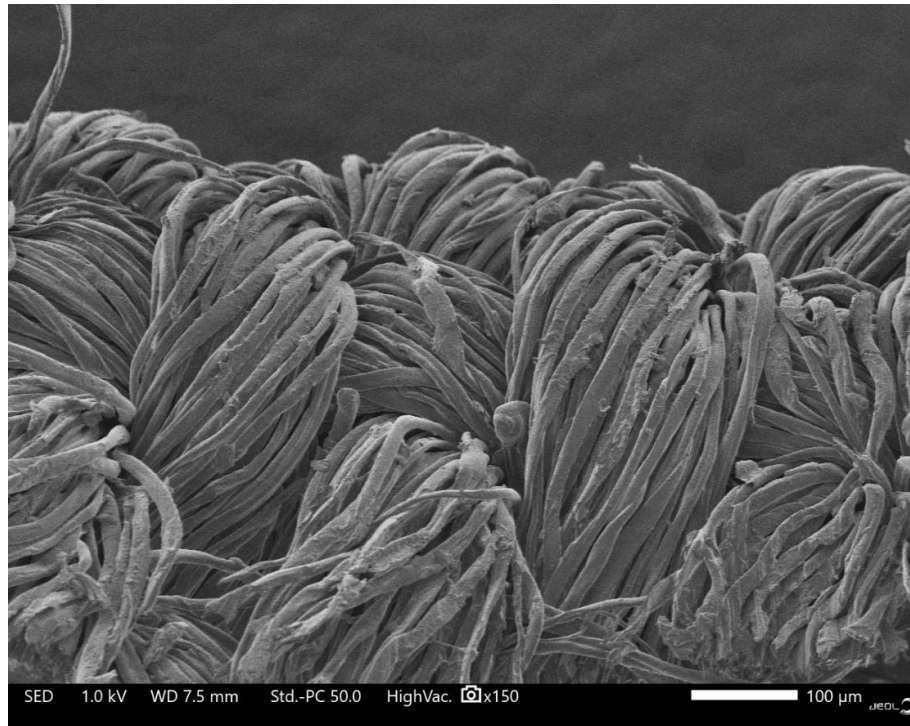
1 kV
Secondary Electron Image

Fabric Mask



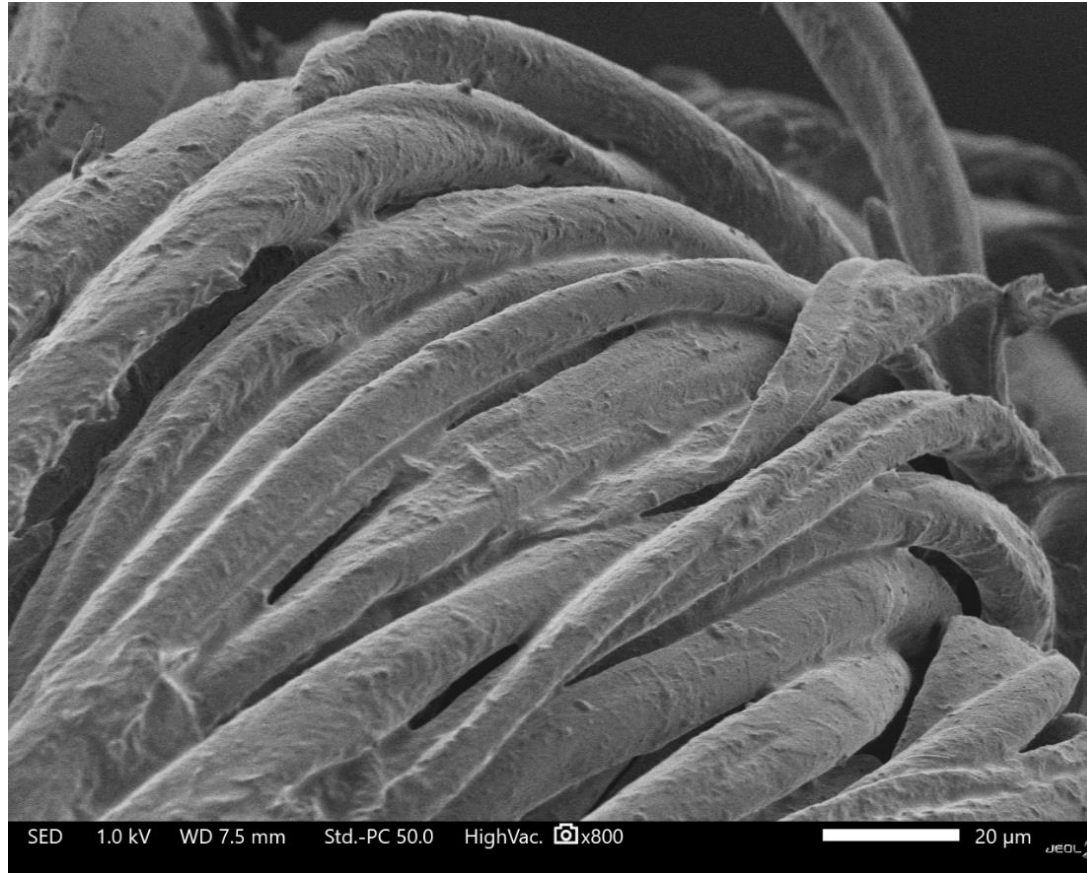
1 kV
Secondary Electron Image

Fabric Mask



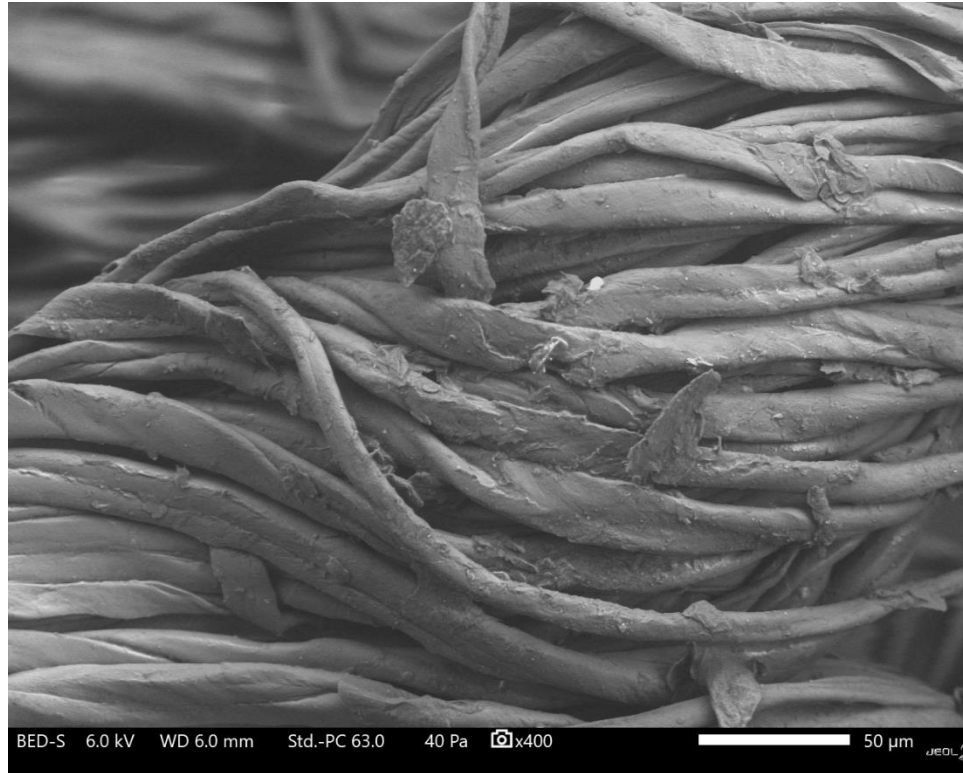
1 kV
Secondary Electron Images

Fabric Mask



1 kV
Secondary Electron Image

Fabric Mask



6 kV
Low Vacuum (LV)
Backscatter Electron Image

JSM-IT500HR

Specifications:

Mag: 5 to 600,000X (print); 14 to ~1,680,000X (24" display)

kV: 0.5 to 30kV

Resolution: Thermal Schottky FE gun

High Vacuum (SE): 1.5 nm (30kV), 4 nm (1kV)

Low Vacuum (BSE): 1.8 nm (30kV)

Large chamber with in-chamber stage. 5-Axes stage automation.

X = 125 mm, Y= 100 mm, Z = 5 to 80 mm,

T = -10° to +90°, R = 360° continuous

Low Vacuum Pressure: 10 to 150Pa

Standard features:

ZeroMag: Embedded Color Camera for Seamless Navigation from Optical to SEM Imaging

Automated large area montage (includes montage maps with analytical models)

SE Detector and High Sensitivity Solid State BSE Detector

Operation Knob Set

Easy to use, remote-enabled software interface (Windows® 10, 64bit OS)

Typical Accessories:

LV secondary electron detector, Chamberscope, PCD (probe current detector),

EDS, WDS, CL, EBSD, 3D Image Software...

